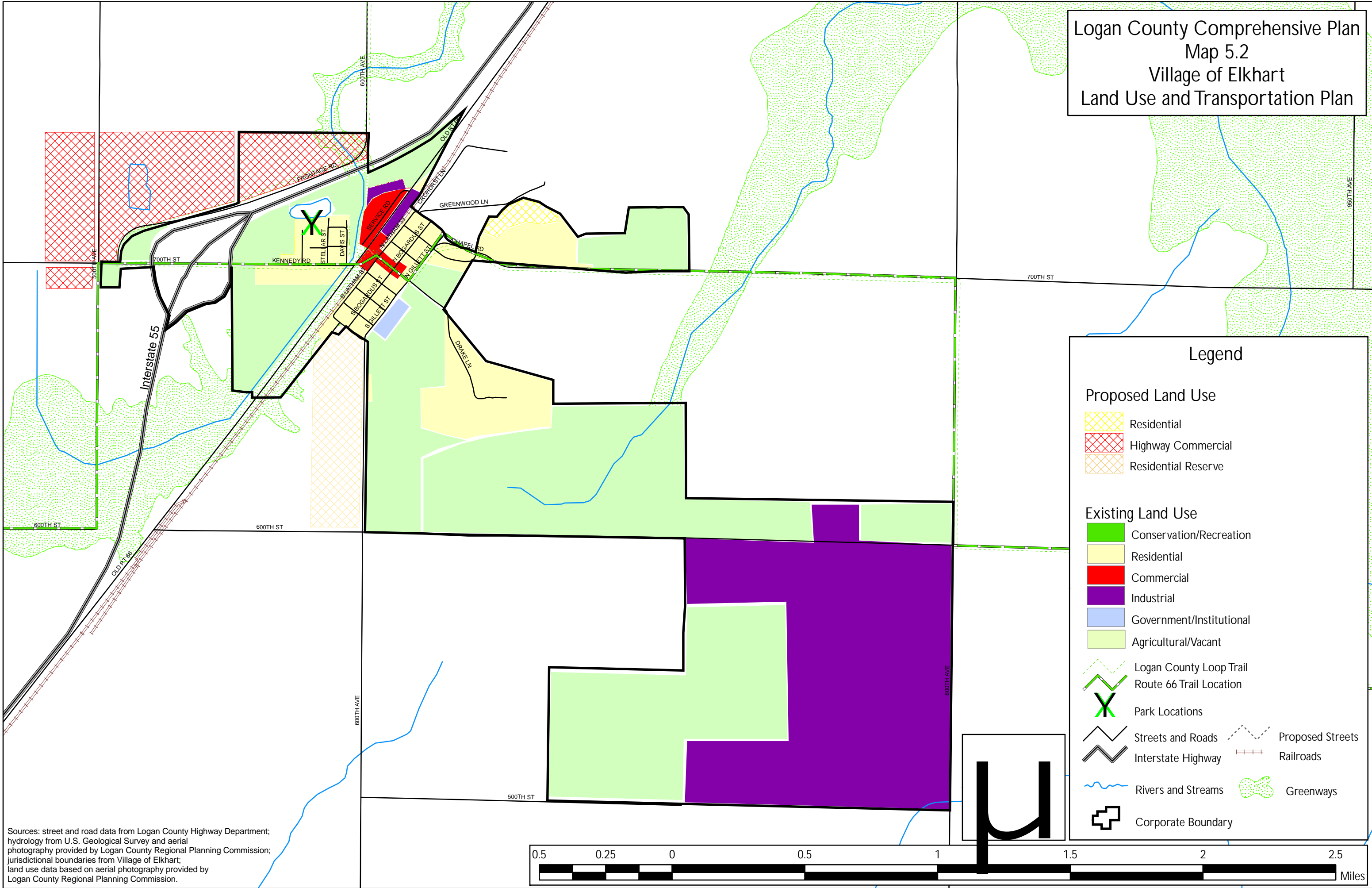


Logan County Comprehensive Plan
 Map 5.2
 Village of Elkhart
 Land Use and Transportation Plan



Legend

Proposed Land Use

- Residential (Yellow cross-hatch)
- Highway Commercial (Red cross-hatch)
- Residential Reserve (Orange cross-hatch)

Existing Land Use

- Conservation/Recreation (Green)
- Residential (Light Yellow)
- Commercial (Red)
- Industrial (Purple)
- Government/Institutional (Blue)
- Agricultural/Vacant (Light Green)

Transportation and Other Features

- Logan County Loop Trail (Green dashed line)
- Route 66 Trail Location (Green dashed line with 'X')
- Park Locations (Green 'X')
- Streets and Roads (Black line)
- Interstate Highway (Black line with 'I')
- Rivers and Streams (Blue wavy line)
- Greenways (Green dotted area)
- Proposed Streets (Black dashed line)
- Railroads (Black line with cross-ticks)
- Greenways (Green dotted area)
- Corporate Boundary (Black outline)

Sources: street and road data from Logan County Highway Department; hydrology from U.S. Geological Survey and aerial photography provided by Logan County Regional Planning Commission; jurisdictional boundaries from Village of Elkhart; land use data based on aerial photography provided by Logan County Regional Planning Commission.

